



BCIG Annual Data Collection Financial Year 2018-2019

Kate Hanvey

03/02/2020

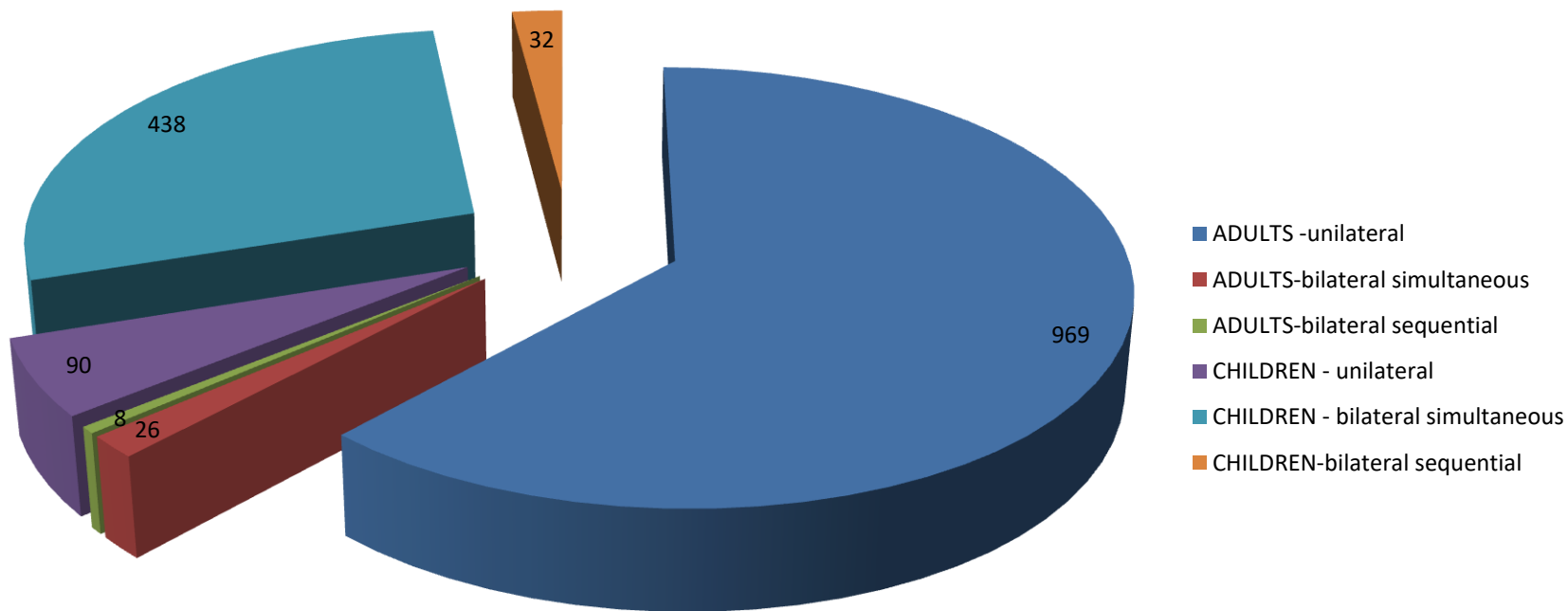
Total number of new CI recipients

01/04/2018 - 31/03/2019

2018/2019	ADULTS	CHILDREN
UNILATERAL	969	90
BILATERAL: SIMULTANEOUS	26	438
BILATERAL: SEQUENTIAL	8	32
TOTAL NEW CASES= 1563	1003	560

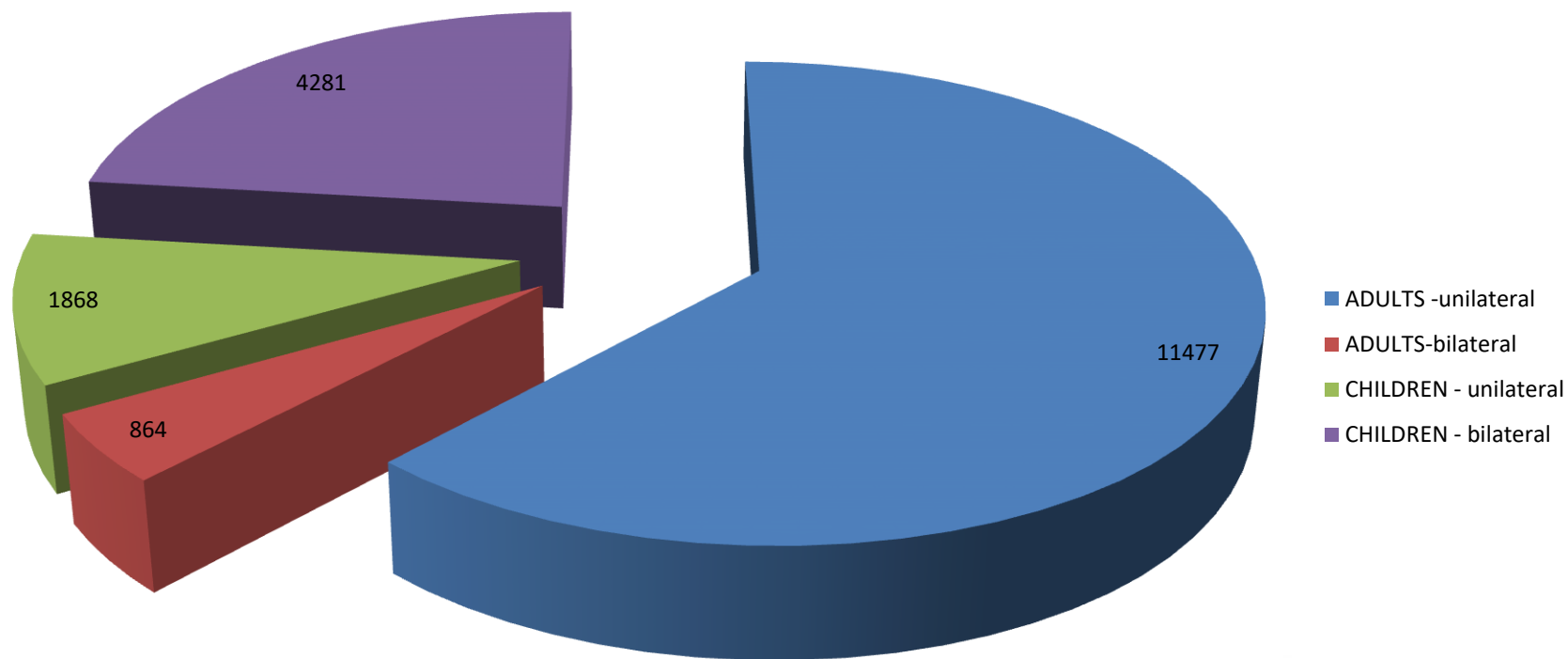


Total Number of New CI Recipients 01/04/2018 – 31/03/2019 N= 1563

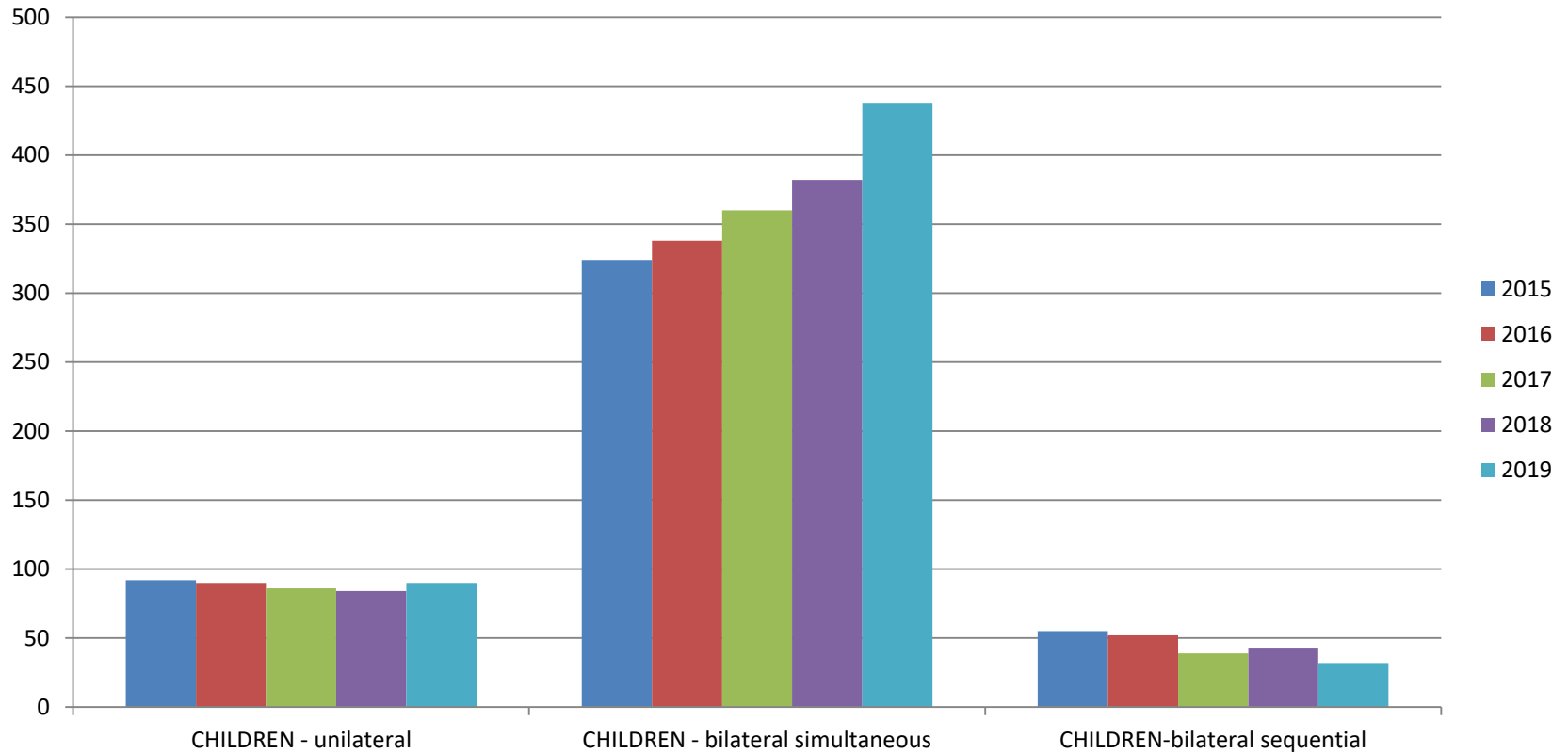


Total Maintained CI Population in the UK

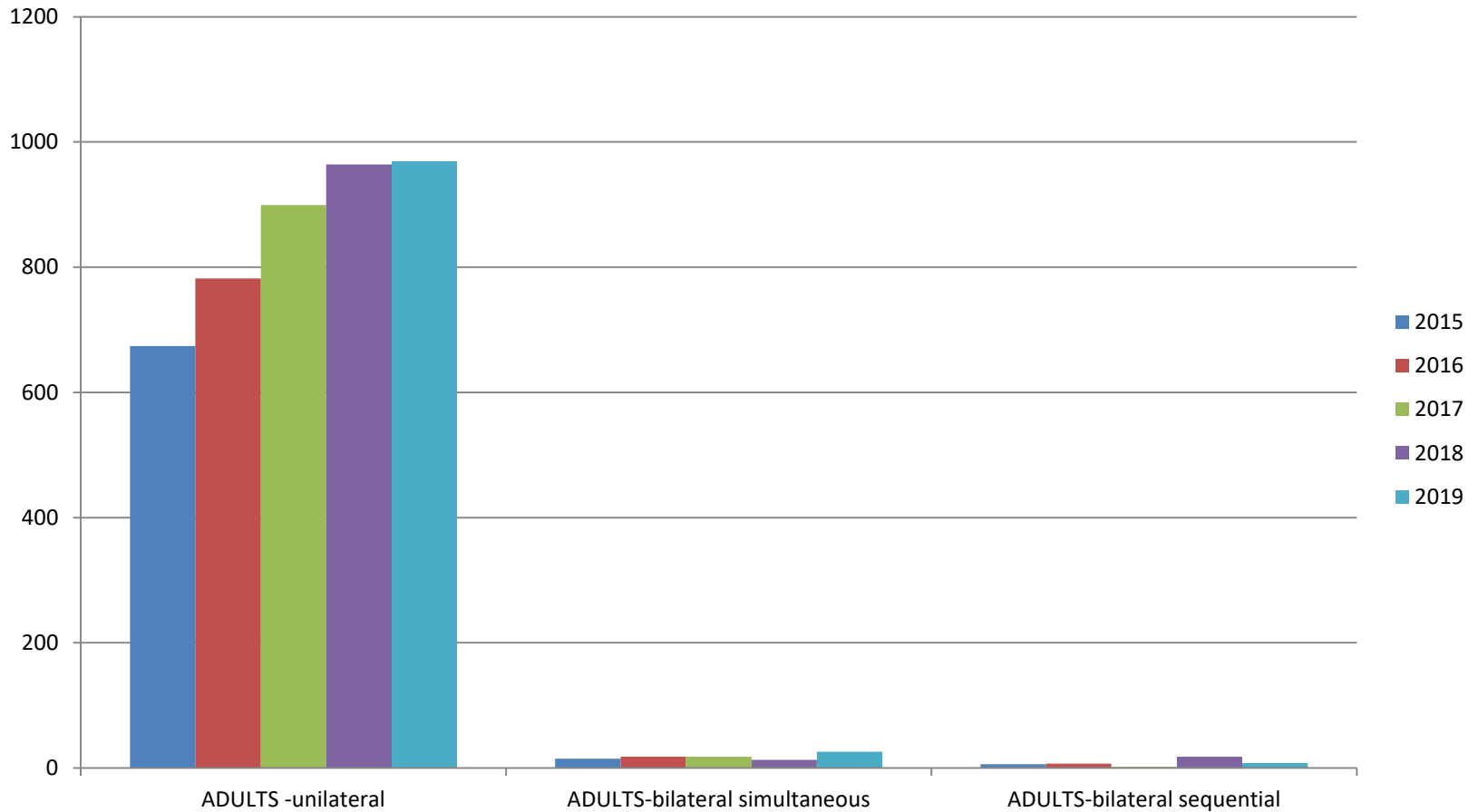
Year ended 31 March 2019 N = 18490



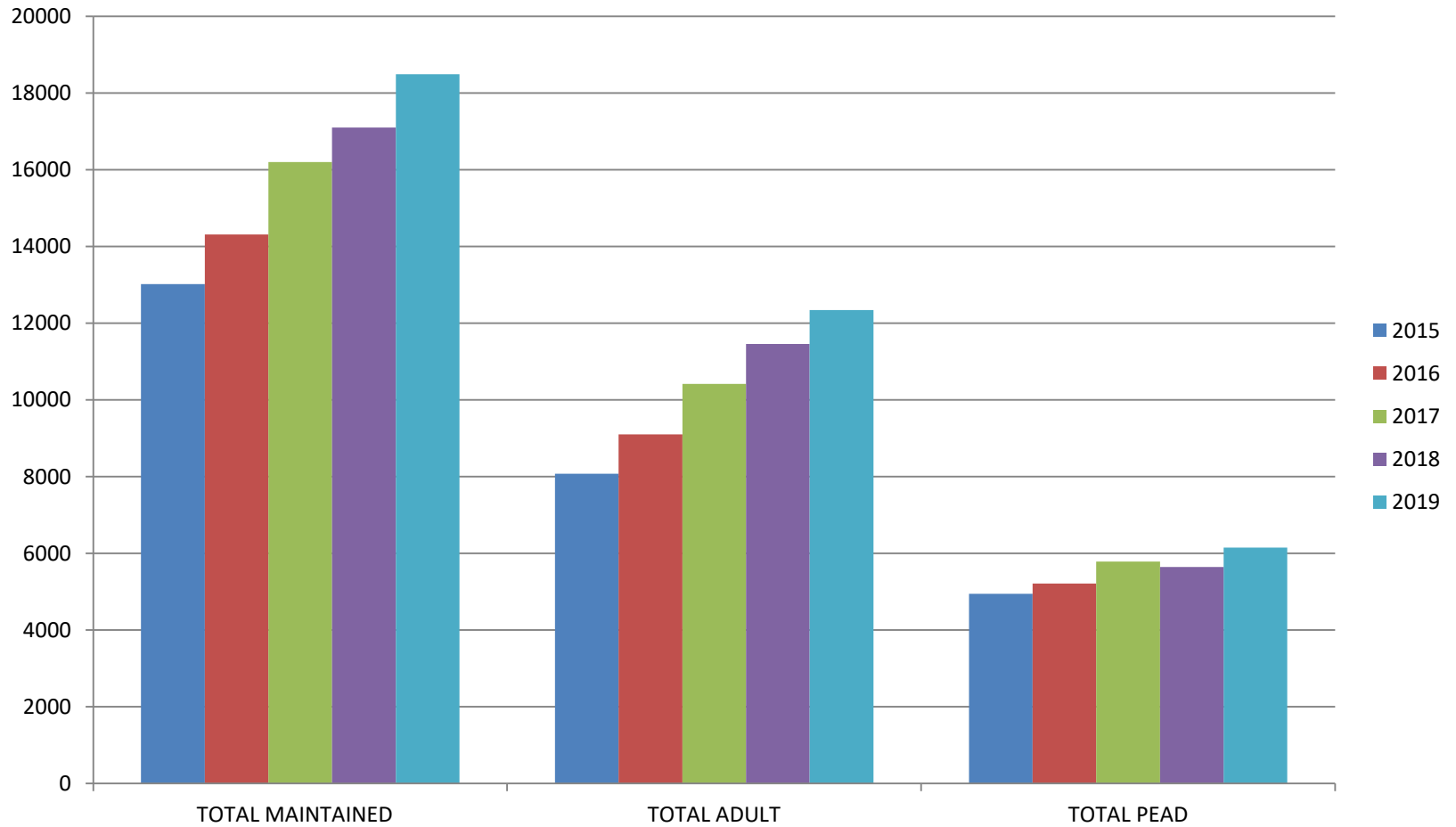
Paediatric trends 2015 to 2019



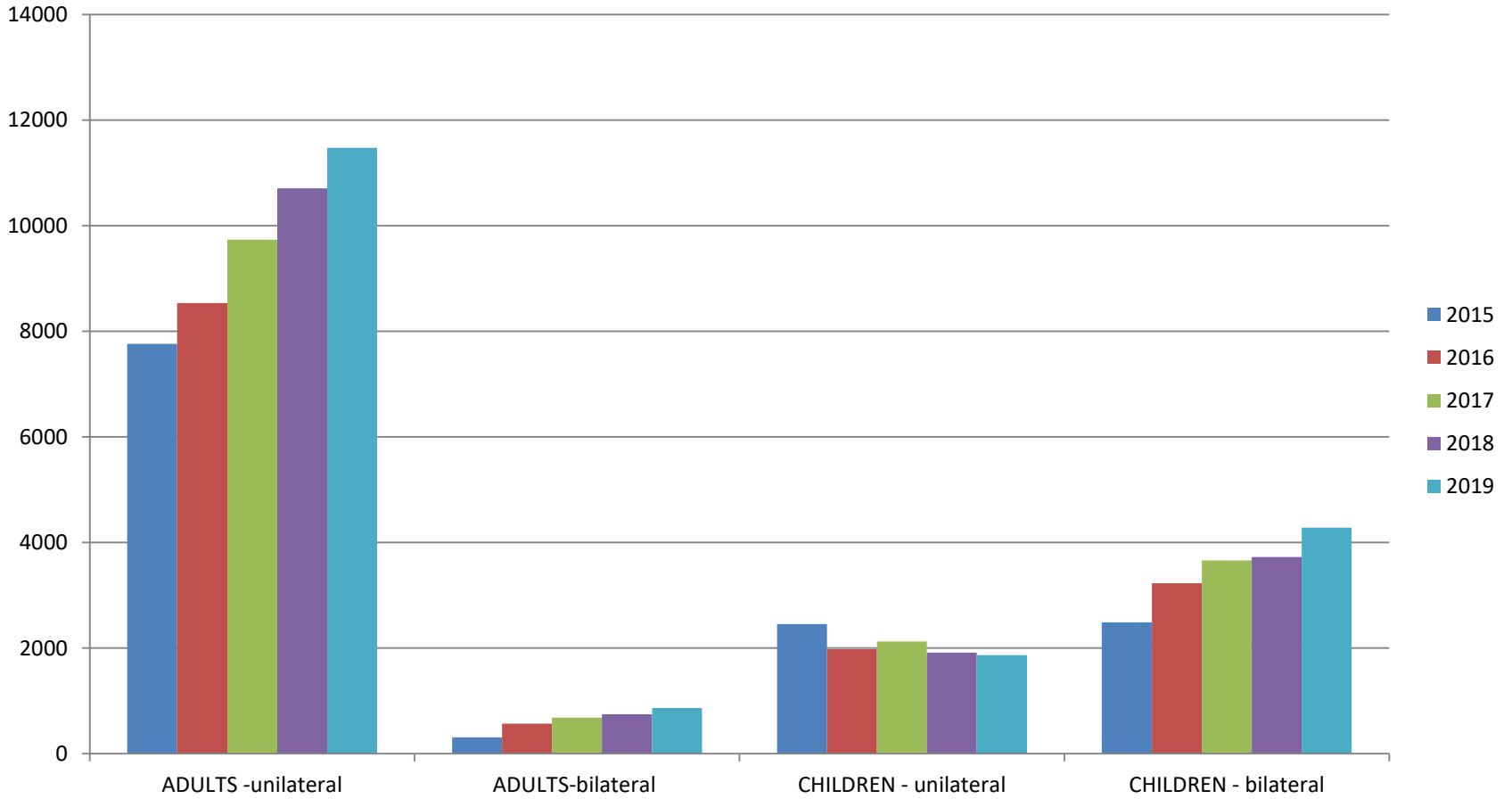
Adult trends new activity 2015 to 2019



Total maintained 2015 to 2019



Maintained Uni / Bi 2015 -2019



Children - trends

- Number of bilateral surgeries is steadily rising year on year with the largest increase seen between 2018 and 2019
- Total of surgeries is still lower than in 2013 due to a bumper year for sequentials
- Sequentials now only account for 6% of activity in year to 31/03/2019, compared to 29% of activity in 2013. This percentage is decreasing year on year
- Percentage of unilaterally implanted children is 16%, steadily declining by 1% year on year since 2015
- In the maintained population of children, 30% are now unilateral, compared to 53% in 2013

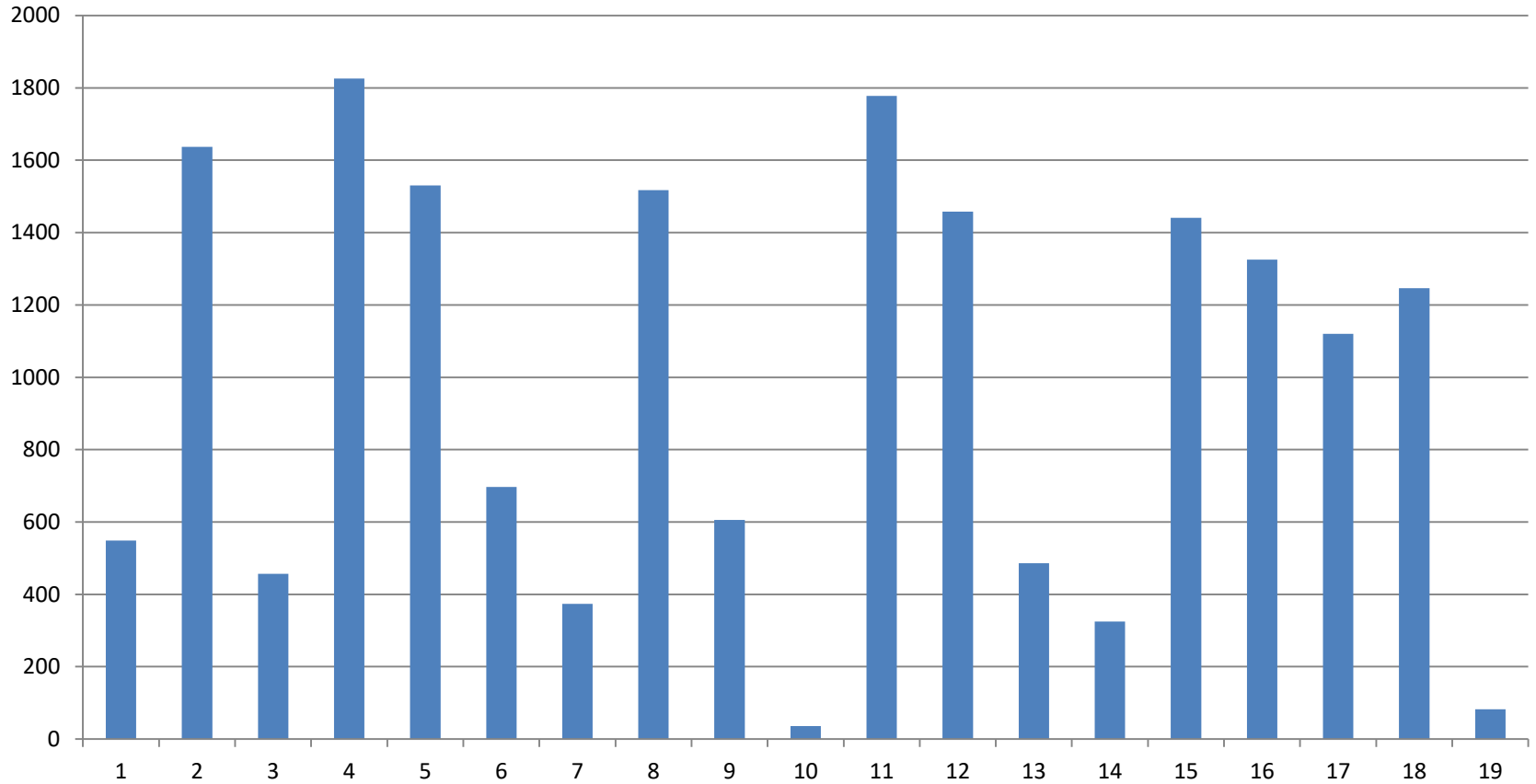


Adults - trends

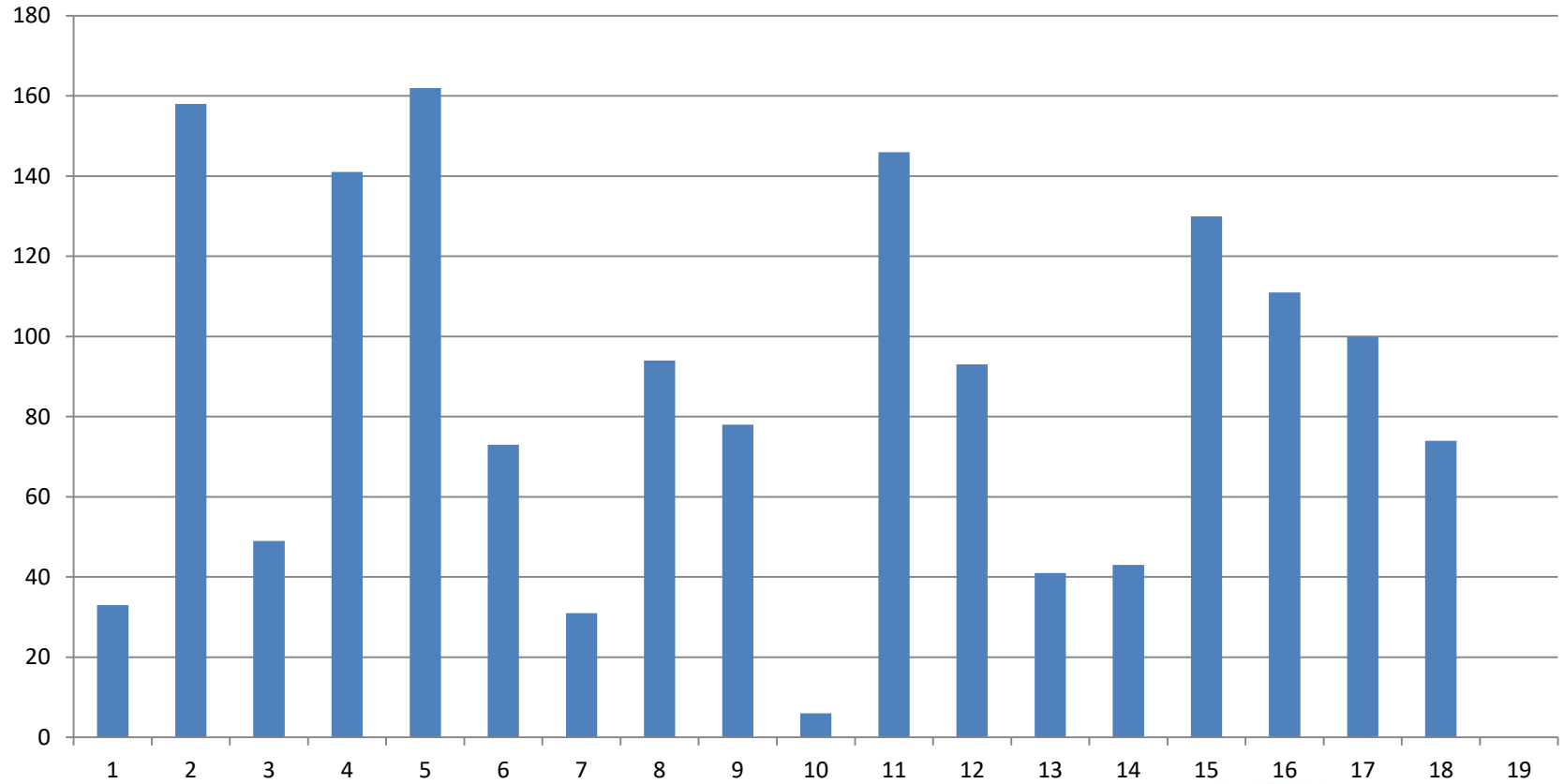
- Whilst the number of new adult cases has dramatically risen since 2013, between 2018 and 2019, there was only a marginal increase of 8 cases
- Unilaterals continue to account for 97% of the surgeries

Anon Centre Data

Total Maintained at 31/03/2019



Anon Centre Data Total New Cases 18/19



Auditory Brainstem Implants (ABI)

- As of 31/03/2019:
 - 2 new unilateral adults
 - 2 new unilateral children

 - 67 maintained unilateral adults
 - 23 maintained unilateral children
 - 1 maintained bilateral adult
 - 1 maintained bilateral child

